



AGRECOVERY

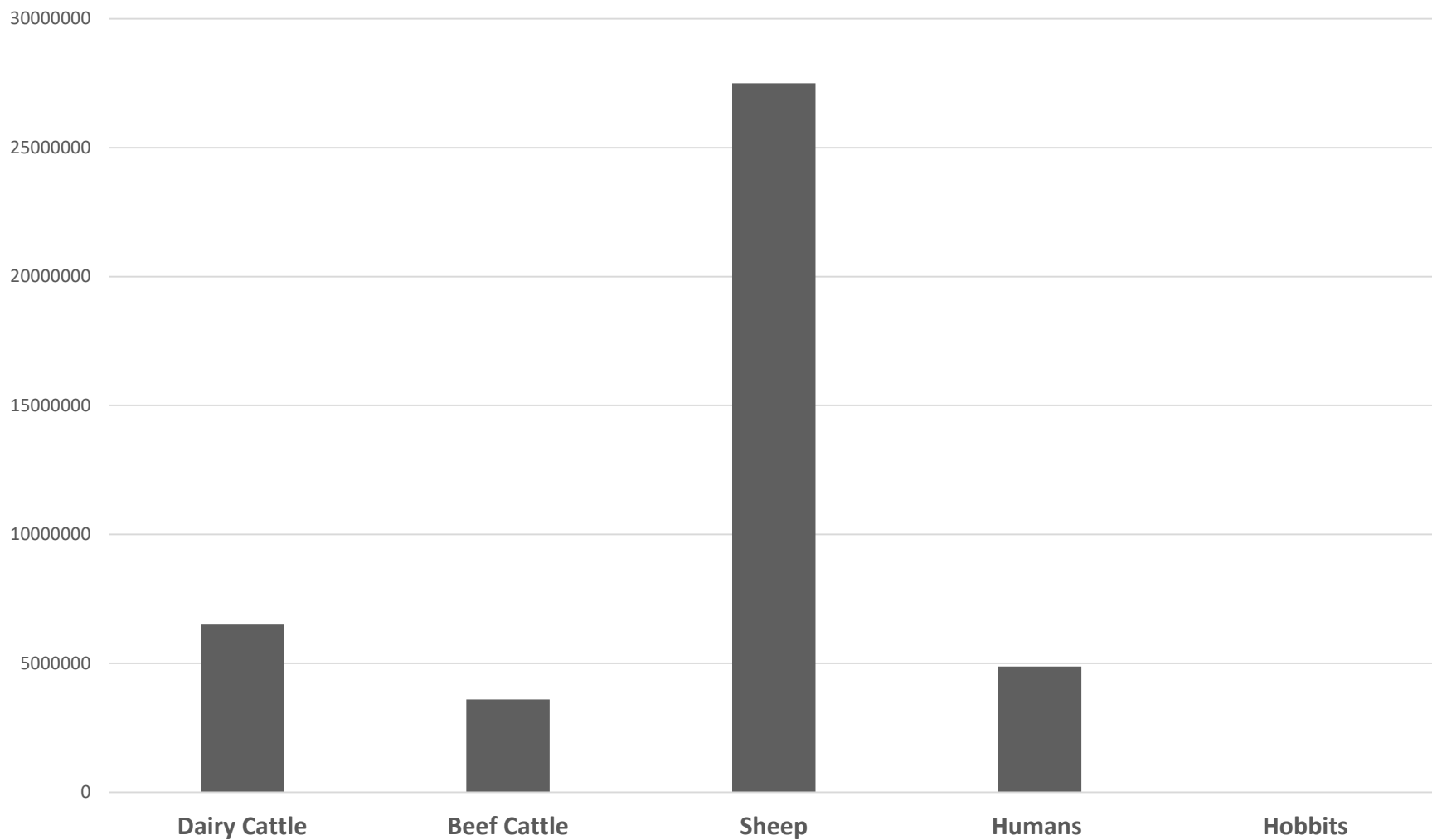
Wiesbaden
2019



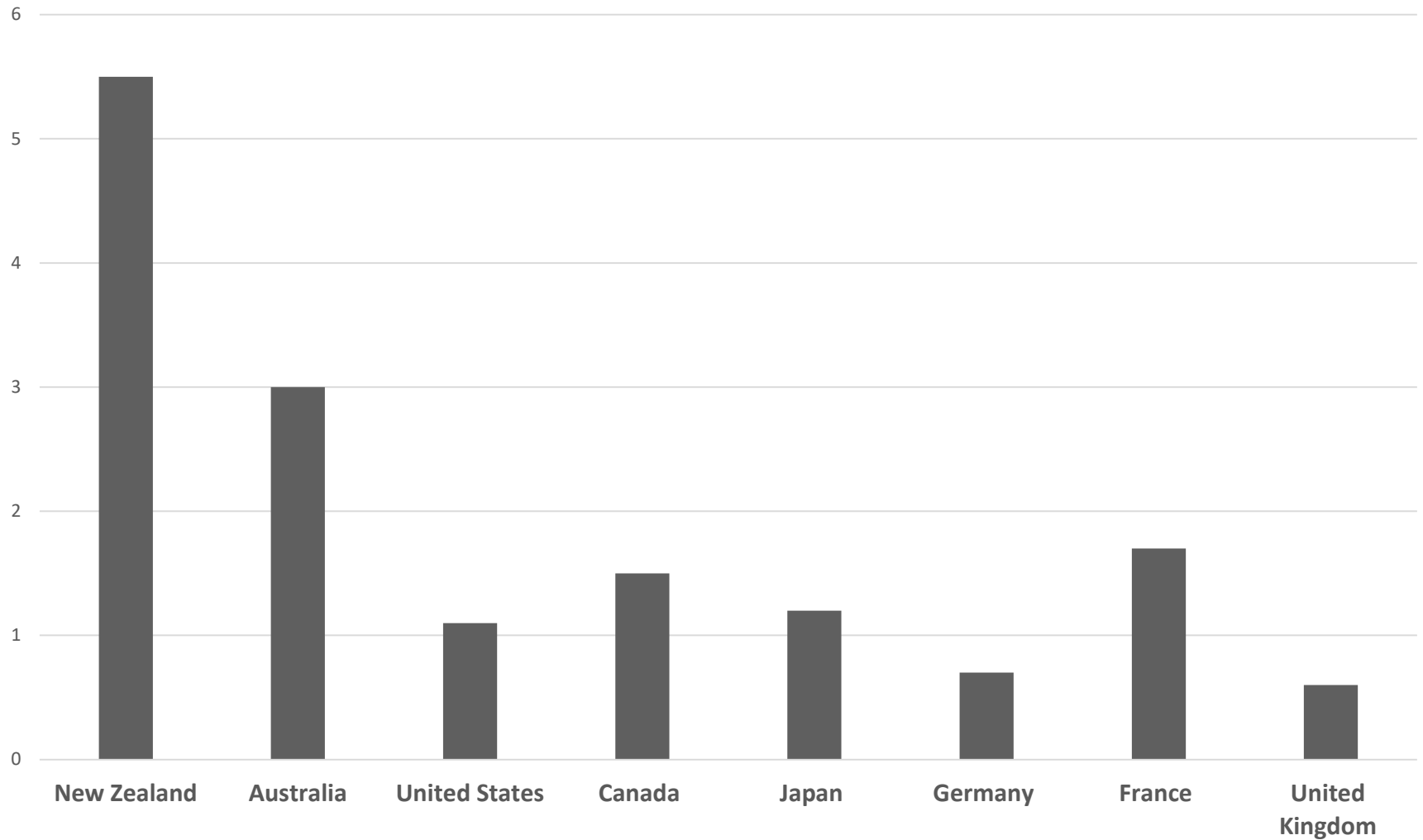




NEW ZEALAND POPULATIONS



AGRICULTURE AS A PROPORTION OF GDP







**TASTE
PURE NATURE**



**NEW ZEALAND
BEEF & LAMB**





Kaitiakitanga = Guardianship

06.2018

NATIONAL GEOGRAPHIC

PLANET OR PLASTIC?

*19 billion pounds
of plastic end up
in the ocean each
year. And that's
just the tip of
the iceberg.*

OUR PURPOSE

To promote and enable sound waste management practices and product stewardship for the primary sector

OUR VISION

Agrecovery is recognised as a global leader in sustainable farm waste management

2018-2019



Year in Review

→ PLASTIC RECYCLING

WE HAVE COLLECTED OVER

437 TONNES
of plastic

Enough solid plastic to fill
a rugby field 9 feet high.



→ PLASTIC COLLECTED FROM FARMS

Containers collected from farms

73,862.5 KG

Total of
145
collections



→ **62,976** KG
drums collected

Total of
239
collections



→ CHEMICAL PROGRAMME

We collected **10.526 tonnes** of
unwanted or obsolete chemicals.

Qualified chemical contractors collect
and dispose of chemicals in accordance
with New Zealand regulations.



TOP 10 SITES

PLASTIC COLLECTED (KG)

★ Blenheim - Resource Recovery Park	40,700
★ Methven - Molloy Agricultural Spraying	21,075
★ Gisborne - Harvest Transport Yard	17,360
★ Ashburton - Ruralco	12,557
★ Pukekohe - Farmlands	9,256
★ Hastings - Whakatu Farmlands	8,868
★ Te Puke - Panax Solutions	7,347
★ Richmond Transfer Station	6,855
★ Motueka - Mariri Resource Recovery Park	6,787
★ Hastings - Fruitfed Supplies	6,304

Agrecovery

BARRIERS TO RECYCLING

- **Cost:** Landfill and burning on farm is cheap!
- **Inconvenience:** Belief that existing services require too much effort
- **Lack of Awareness:** Farmers are simply unaware of services
- **Disjointed Approach:** No cohesive industry strategy to solve issues
- **Lack of Industry Incentive:** Industry not showing leadership
- **Lack of Regulatory or Legislative Support:** EPR? Product Stewardship?

The three critical areas for a resilient rural waste system operated by Agrecovery



Agrecovery is recognised as a global leader in sustainable inorganic farm waste management.





Proposed priority products and priority product stewardship scheme guidelines

Consultation Document

2019



Ministry for the
Environment
Heiwhiri Māta Rau

New Zealand Government

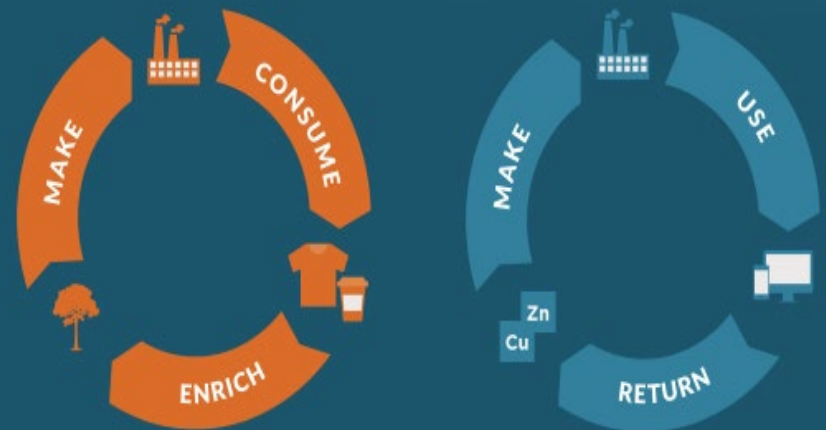
Linear economy



Technical & biological materials mixed up

Energy from finite sources

Circular economy



Biological materials

Technical materials

Energy from renewable sources

Agrecovery

PROPOSED PRIORITY PRODUCTS

1. Tyres
2. Agrichemicals
3. E-waste
4. Refrigerants/SGGs
5. Farm Plastics
6. Packaging

Agrecovery

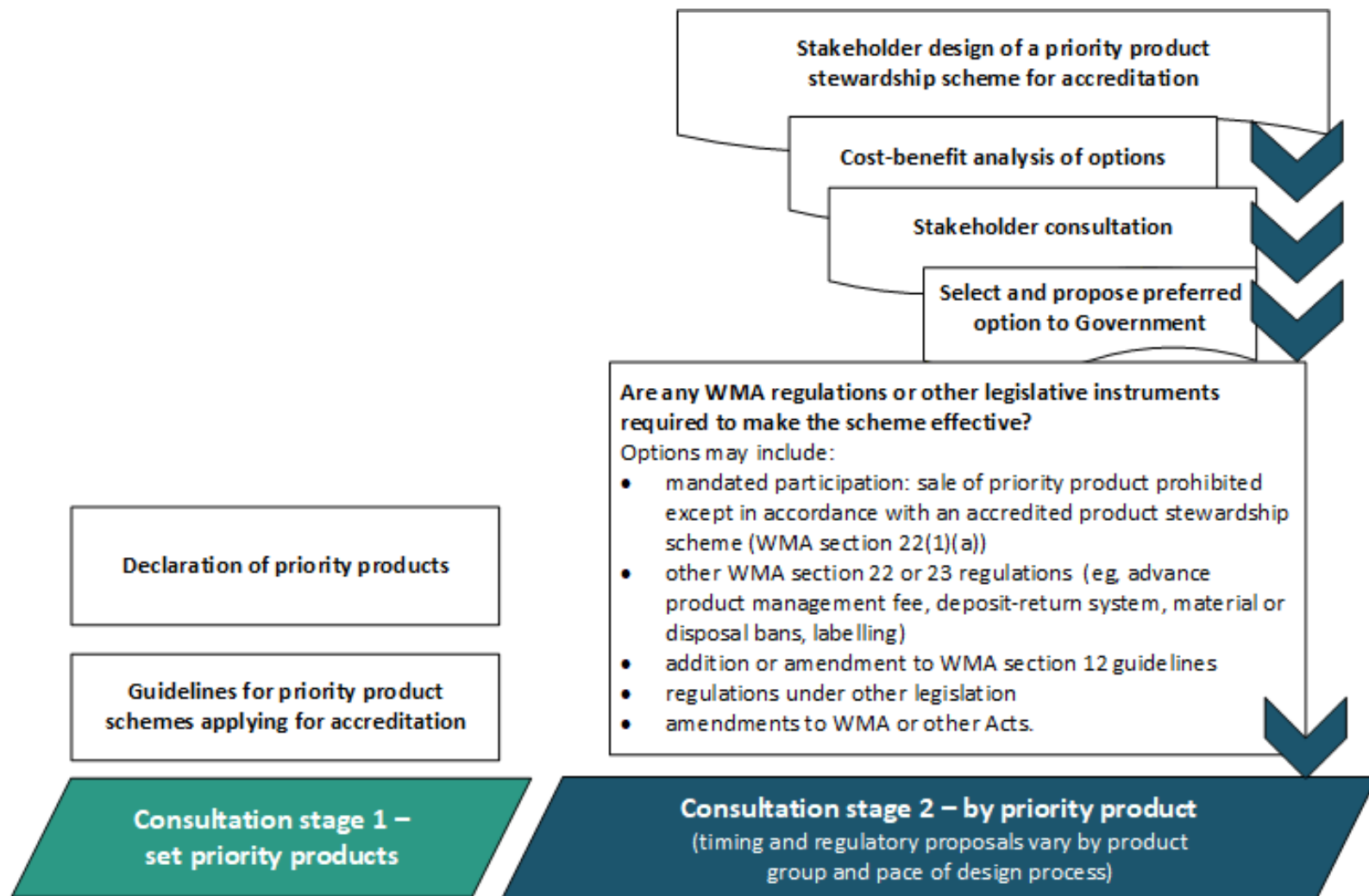
WHY REGULATED PRODUCT STEWARDSHIP?

1. Voluntary schemes have ‘free-rider’ barriers
2. Every product contains embodied environmental impact
3. Producers and designers have the greatest power to reduce impacts
4. It can change drivers from linear to circular

Agrecovery

SCHEME GUIDELINES

1. Likely one scheme for each priority product with clear targets
2. Scheme will have to be not-for-profit and competitively neutral
3. Competition for down-stream services
4. Services must be free and convenient for all end-users
5. Must focus on the broader product stewardship concepts
6. Proposed guidelines largely based on the 'Agrecovery' model

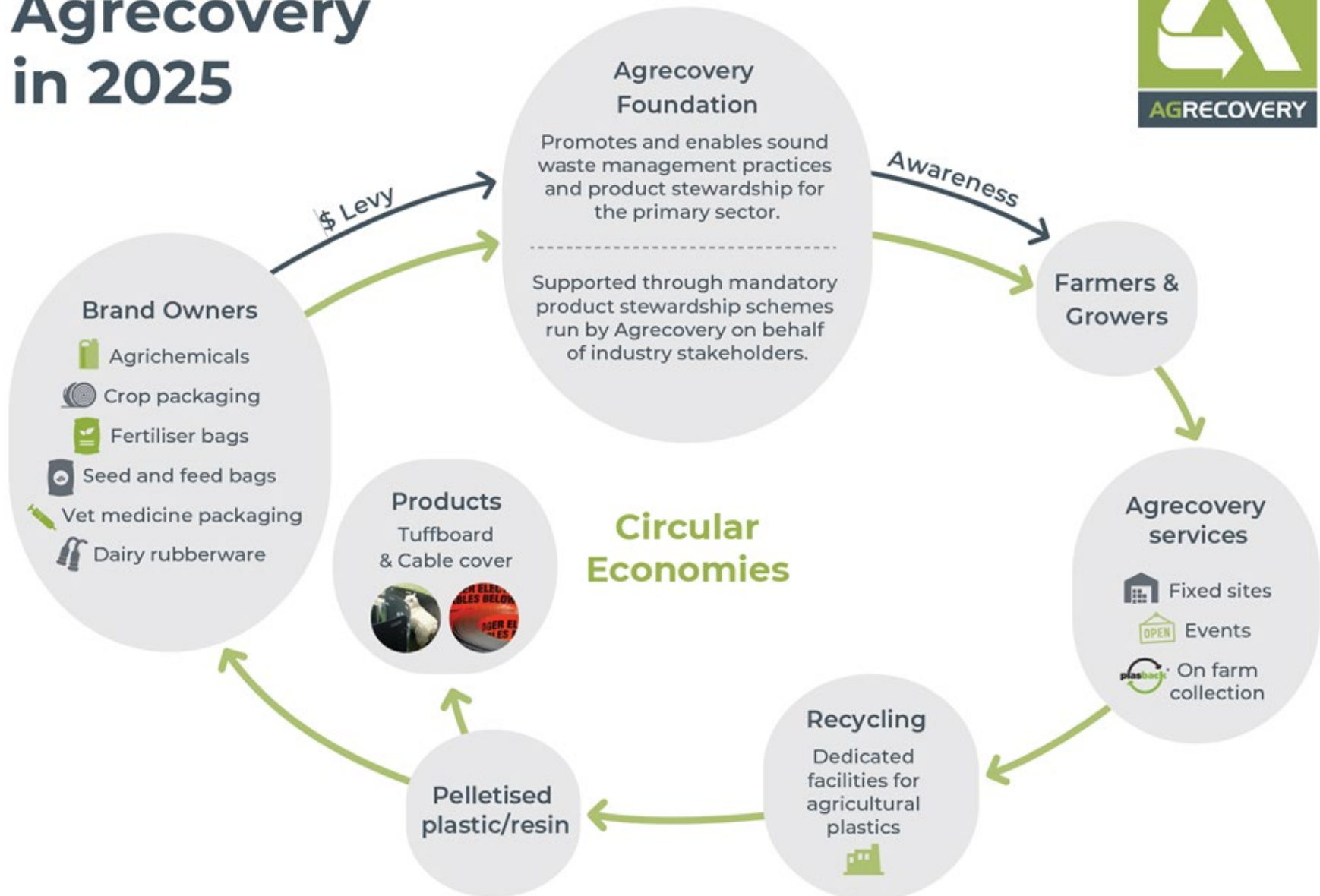


Agrecovery

ROLE IN CODESIGN PROCESS

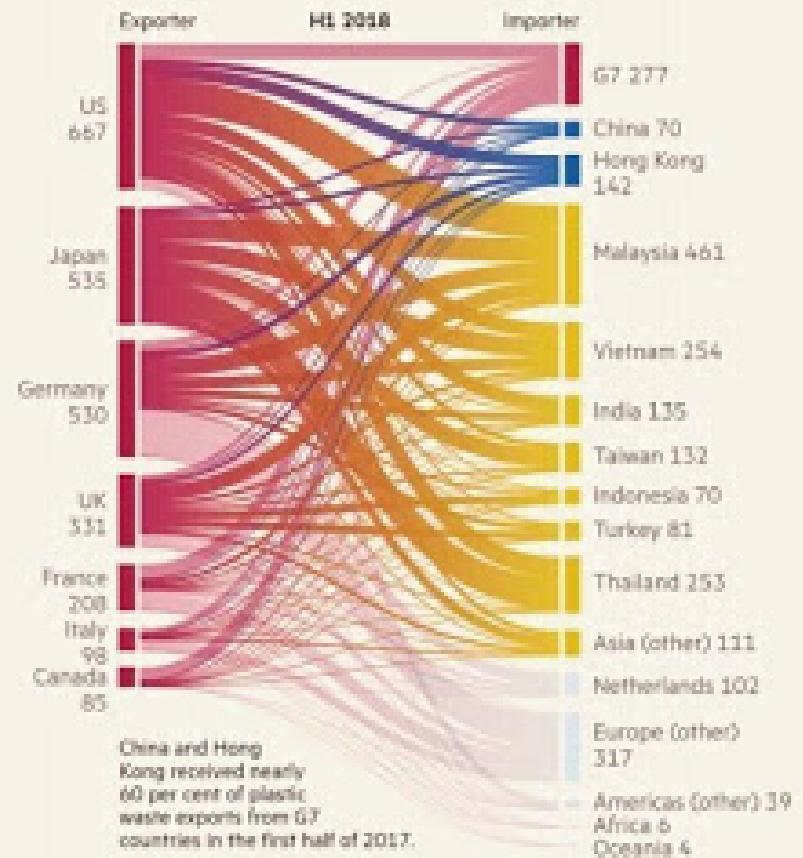
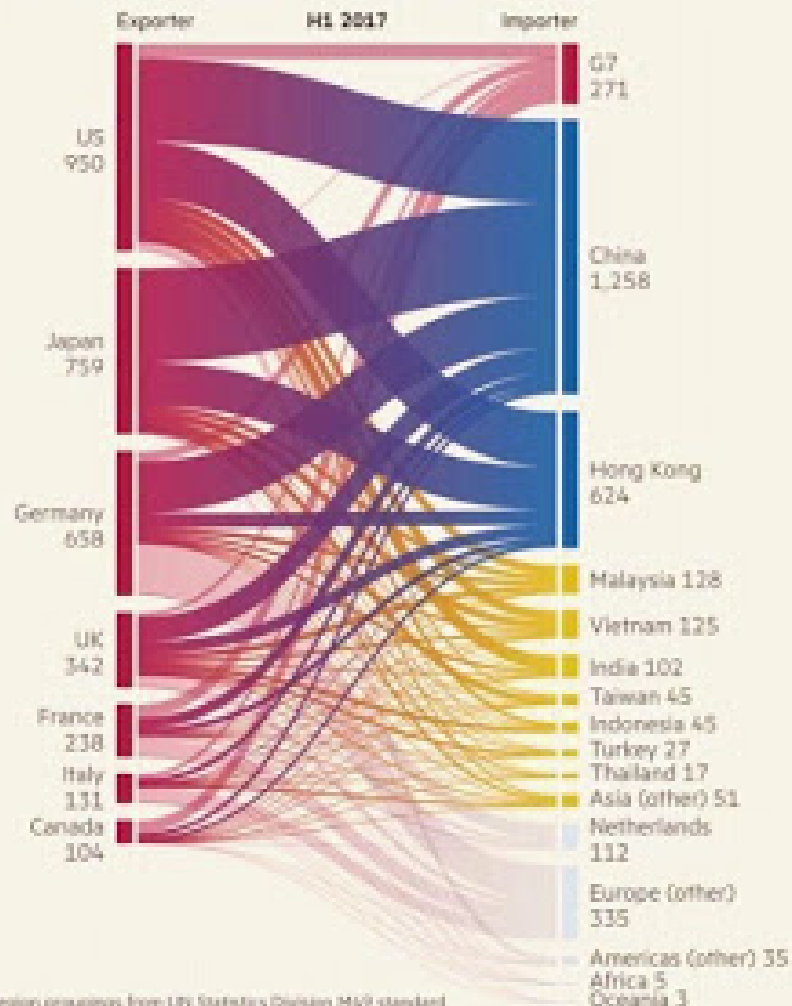
1. Government will set the parameters, stakeholders will design scheme
2. Agrecovery funded by Government to consult stakeholders
3. Design scheme that will meet overarching guidelines

Agrecovery in 2025



How the global river of plastic waste changed course in just 12 months

Exports of plastic waste, parings and scrap from G7 countries ('000 tonnes)



China and Hong Kong received nearly 60 per cent of plastic waste exports from G7 countries in the first half of 2017.

Following a Chinese crackdown on imports of plastic waste, which came into effect at the beginning of 2018, exports from the G7 fell by more than 20 per cent overall. The share of the remaining exports that went to China and Hong Kong fell below 10 per cent, with other Asian countries – particularly Malaysia – making up much of the shortfall.

Visual journalism David Blood, Liz Faurie, Andrew Reinland

The three critical areas for a resilient rural waste system operated by Agrecovery



Agrecovery is recognised as a global leader in sustainable inorganic farm waste management.





AGRECOVERY

Questions?